

# Slow 12 Bar 6/8 (Waltz feel) - "All Blues" Changes

PLAY 6 CHORUSES TOTAL

The musical notation consists of five staves. The first staff begins with a treble clef and a 6/8 time signature. The first four staves contain rhythmic patterns represented by slanted lines. The fifth staff contains a diamond-shaped chord symbol in the final bar, with a vertical line extending downwards from it. Above the fifth staff, a bracket spans the last three bars, with the text "1, 2, 3, 4, 5" above the first two bars and "(12)" above the last two bars. A double bar line with repeat dots is at the end of the fifth staff.

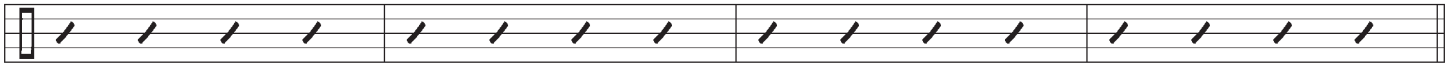
# Uptempo 32 Bar Swing - "Rhythm" Changes

PLAY 6 CHORUSES "4" FEEL

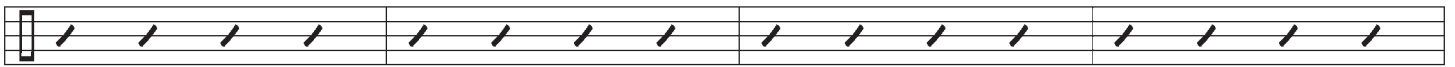
A



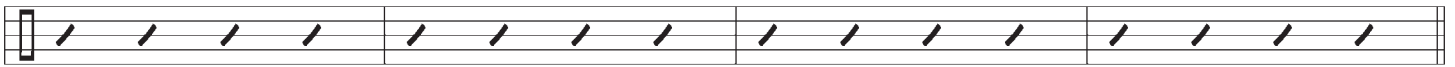
(8)



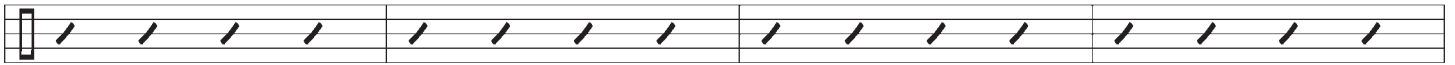
A2



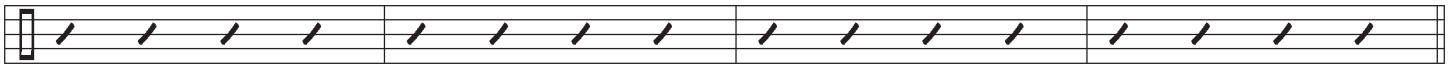
(8)



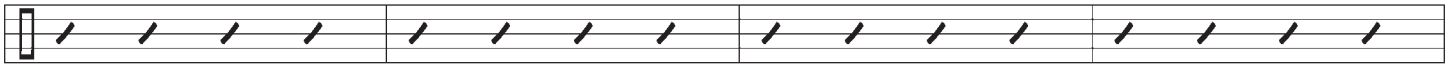
B



(8)

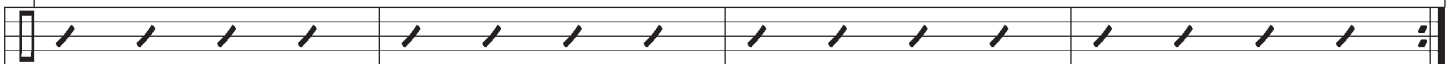


A

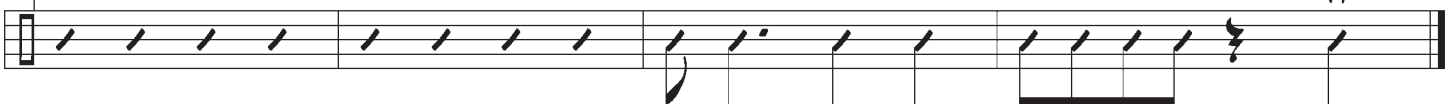


1, 2, 3, 4, 5

(8)



6



# 16/8/16 Bar Samba - "One Note Samba" Changes

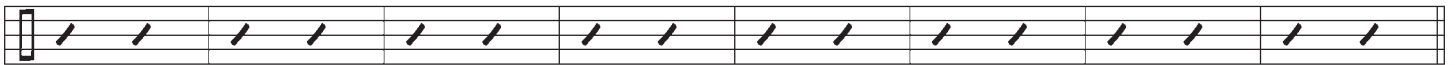
PLAY 5 CHORUSES

A

(8)



(16)



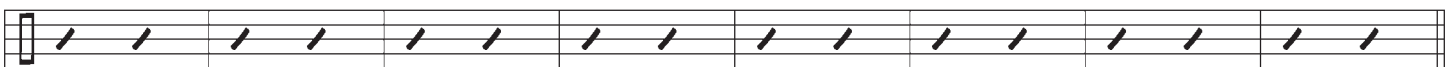
B

(8)



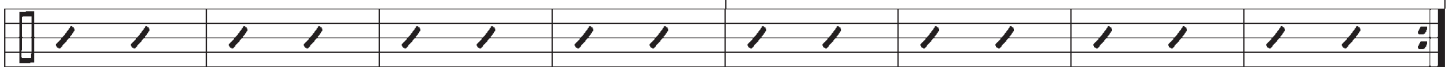
A

(8)

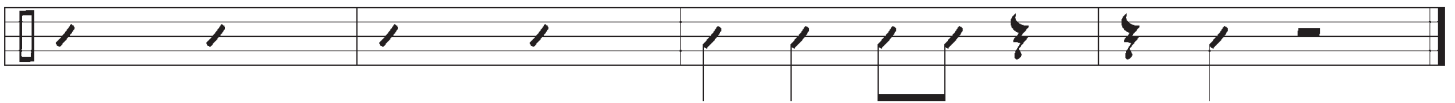
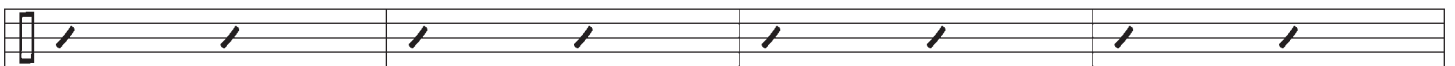
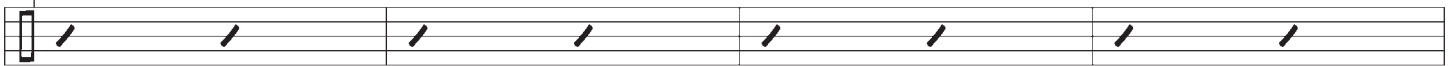


1, 2, 3, 4

(16)



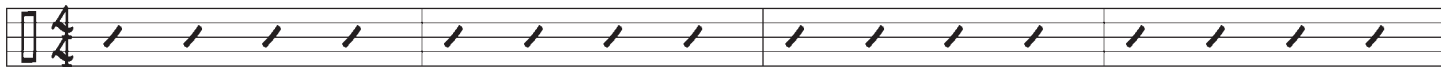
5



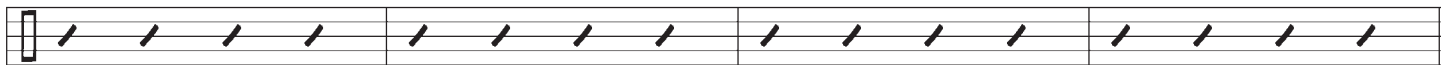
# Uptempo 32 Bar Latin/Swing - "Green Dolphin St." Changes

PLAY 5 CHORUSES

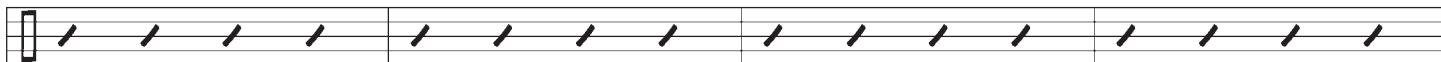
**A** latin



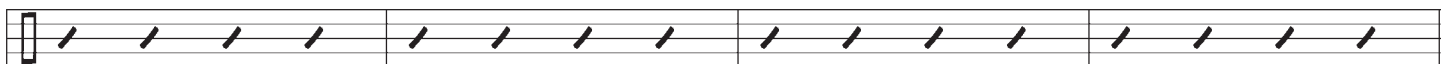
(8)



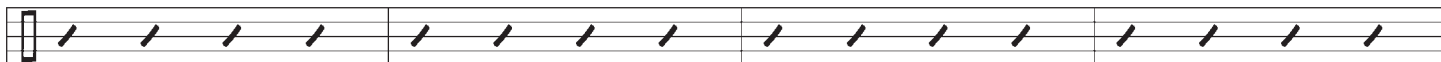
**B** swing



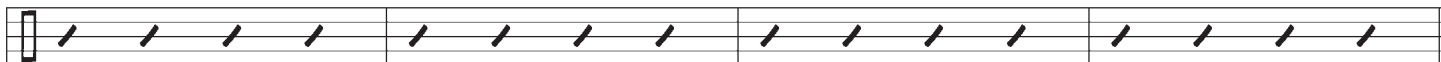
(8)



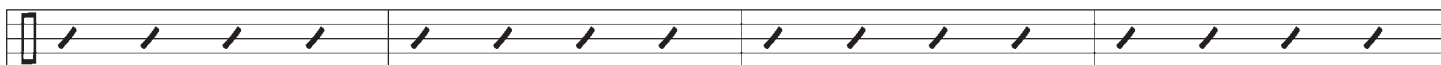
**A** latin



(8)

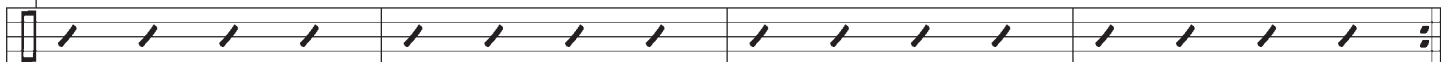


**B2** swing



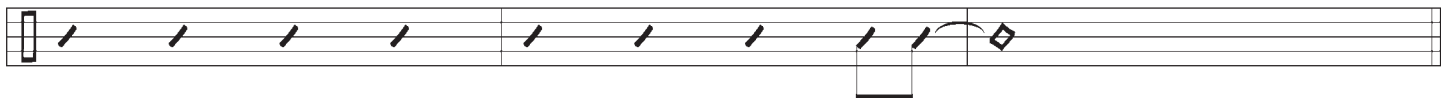
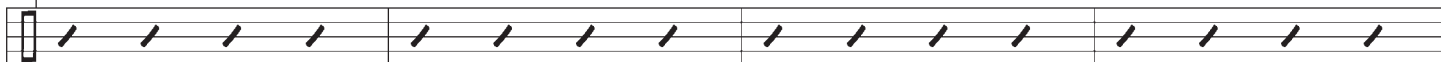
1, 2, 3, 4

(8)



5

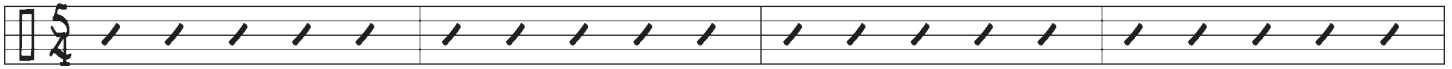
(8)



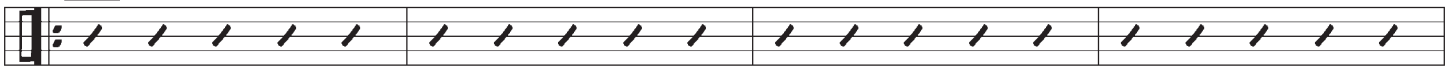
# Medium 24 Bar 5/4 - "Take Five" Changes

PLAY 7 CHORUSES TOTAL

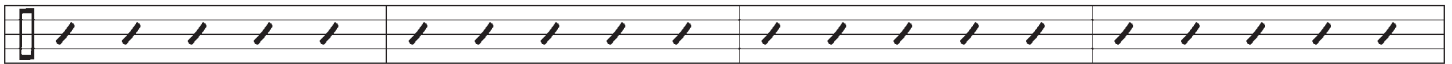
Intro (piano)



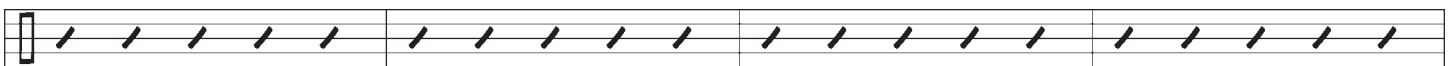
A



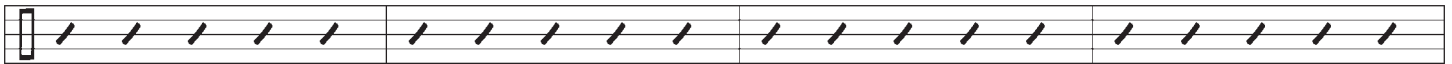
(8)



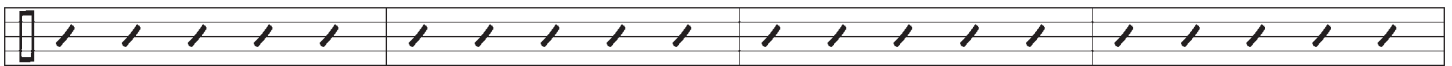
B



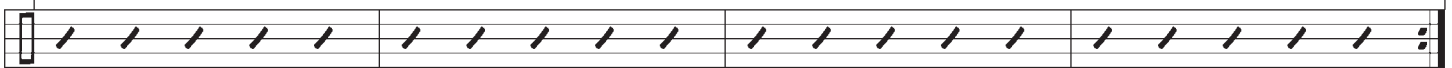
(8)



A



1, 2, 3

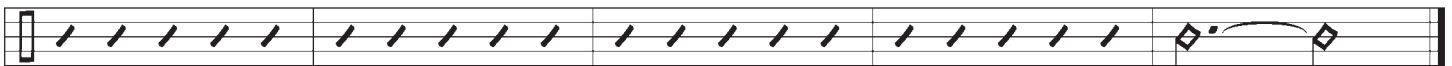


(8)

4



(8)



(piano)